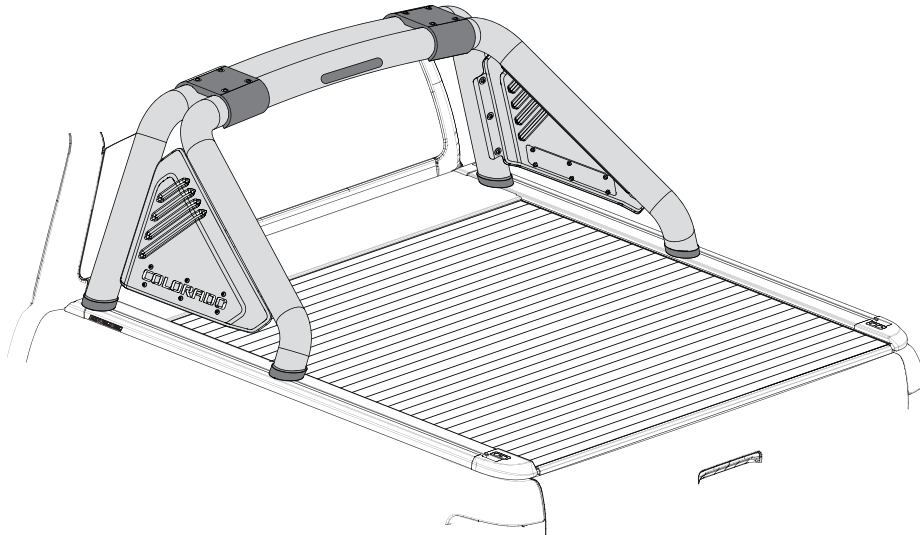


Holden Colorado

RollTrac Sports Bar Adaptor Kit

Installation Instructions



Installation Time: Approx. 30 mins

Place these instructions in vehicle's glove box after installation is complete

General Notes

- Read through the fitting instructions before installation of accessory.
- Always install the accessory following the fitting instructions. Failure to do so may cause damage to the vehicle or the accessory.
- Ensure all recyclable discarded vehicle accessory components and packaging are recycled following local recycling regulations.
- It is always recommended that this accessory is fitted by a qualified Technician.
- Safely store and protect any removed vehicle components.
- Ensure all bare metal surfaces are protected using Automotive Bare Metal Primer and touch-up paint.
- Please check content of kit using this list and subsequent sketches.
- Remove all metal swarf and dust from all vehicle surfaces if surface is used for accessory installation.

Safety Notes

- Check that all work practices comply with safety standards.
- Please wear appropriate clothing and use safety equipment.



Care Instructions:



Clean with mild detergent and water solution.



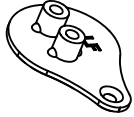
Do not use abrasive cleaners or solvents.



PARTS CHECK SHEET

PARTS IN MAIN CARTON

1



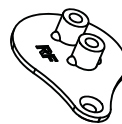
Left Front Foot Plate
Qty - 1

2



Left Rear Foot Plate
Qty - 1

3



Right Front Foot Plate
Qty - 1

4



Right Rear Foot Plate
Qty - 1

5



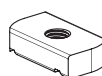
M8x40 Counter Sunk
Socket Head Screw
Qty - 8

6



M8x16 Counter Sunk
Socket Head Screw
Qty - 4

7



M8 T Nut
Qty - 4

8



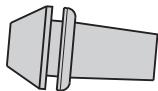
T-Channel Extrusion
Qty - 1

9



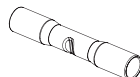
Washer
20mmx2mm
Qty - 2

10



Rubber Grommet
Qty - 1

11



Butt-Splice
Connector
Qty - 6

12



Extension Patch Loom
Qty - 1

13

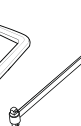


Plastic Tube
Qty - 1

TOOLS REQUIRED



Allen Key



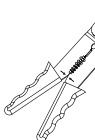
Torque
Wrench



Ratchet
Wrench



Allen Head
Socket



Electrical
Pliers



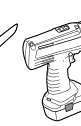
Centre
Punch



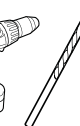
Cutters



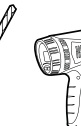
Scissors



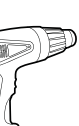
Drill



4.5mm
10mm
Drill Bit



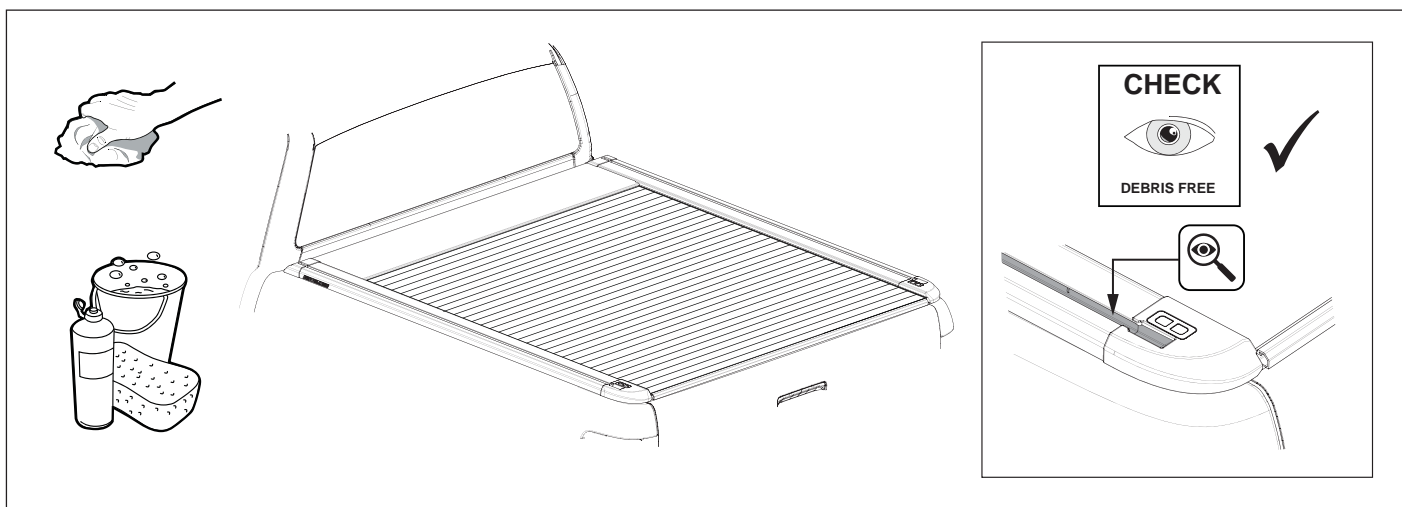
Film Heat
Shrink Gun



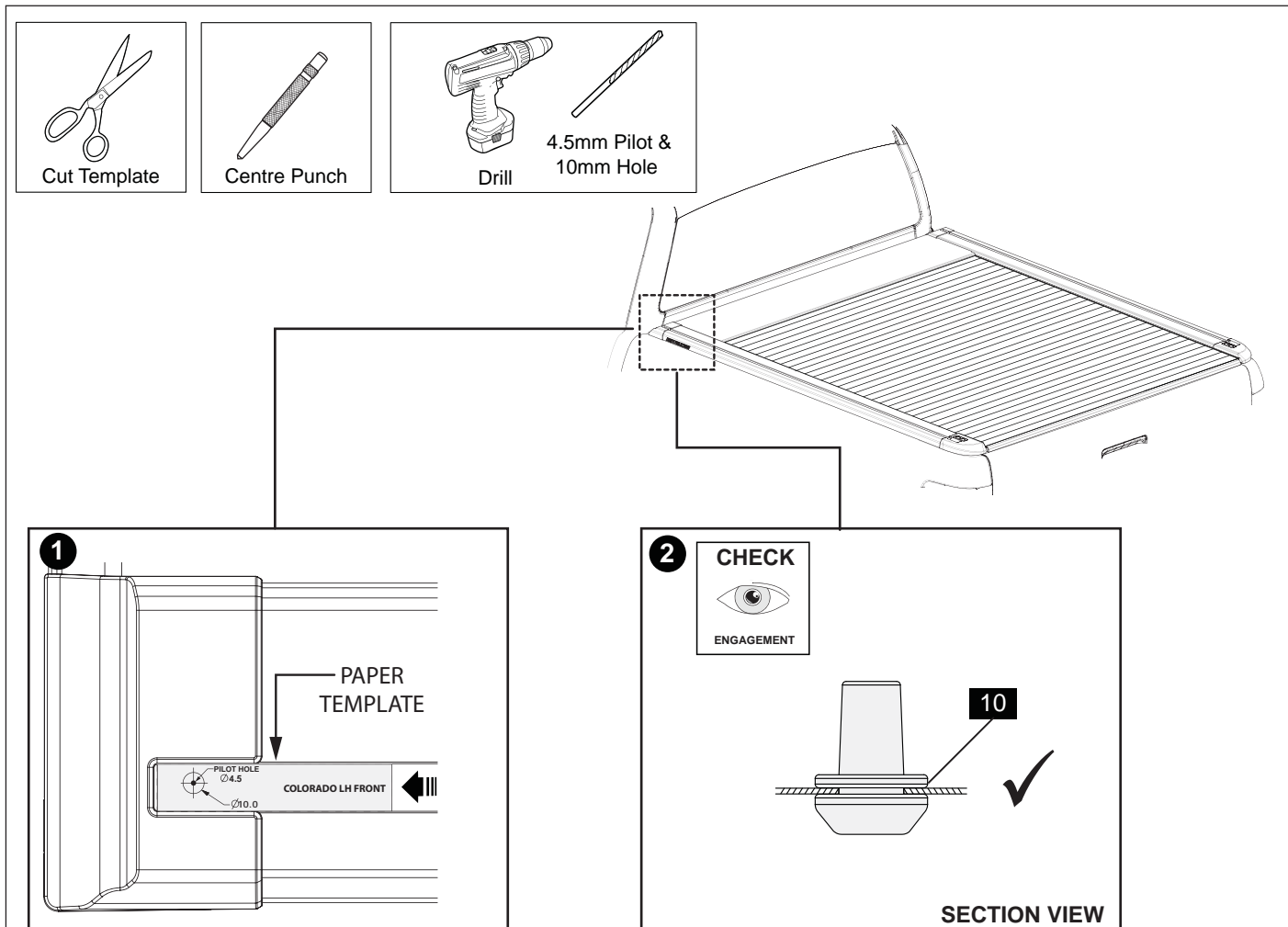
Tape
Measure



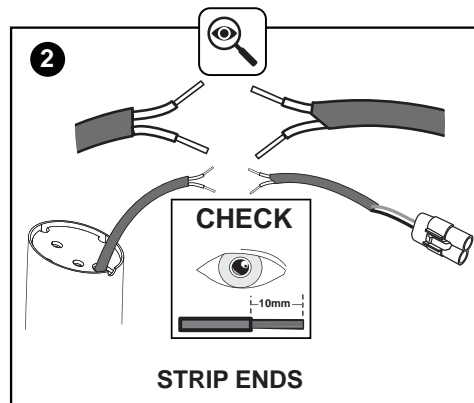
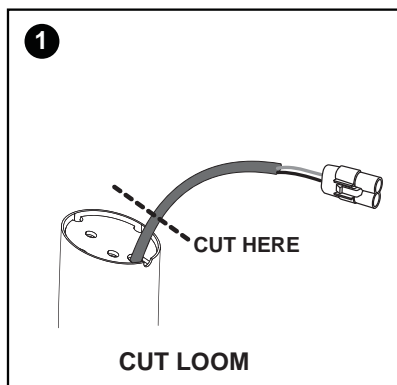
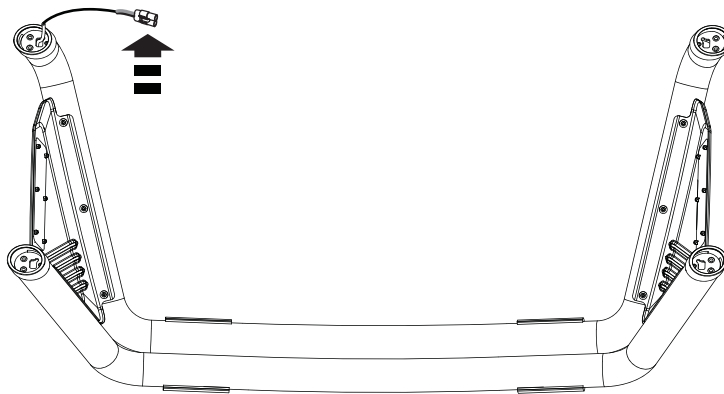
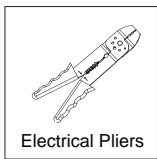
Crimping
Tool



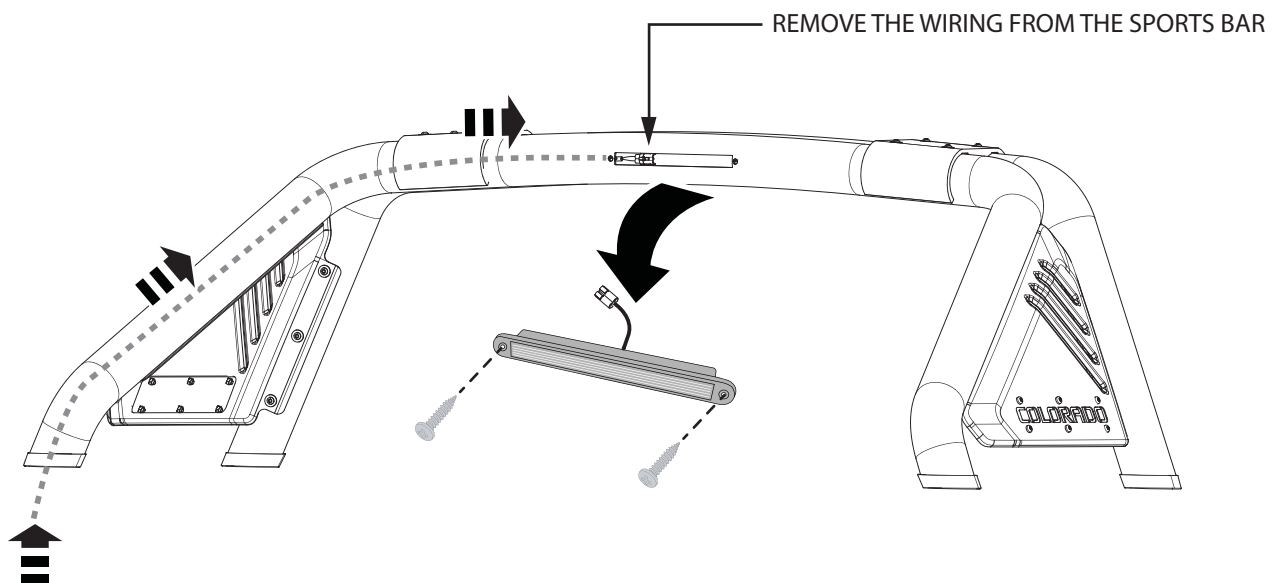
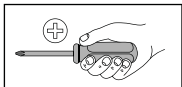
1. Prepare the surface of the side rails by cleaning them thoroughly ensuring that any debris in the side rail channels is completely removed.



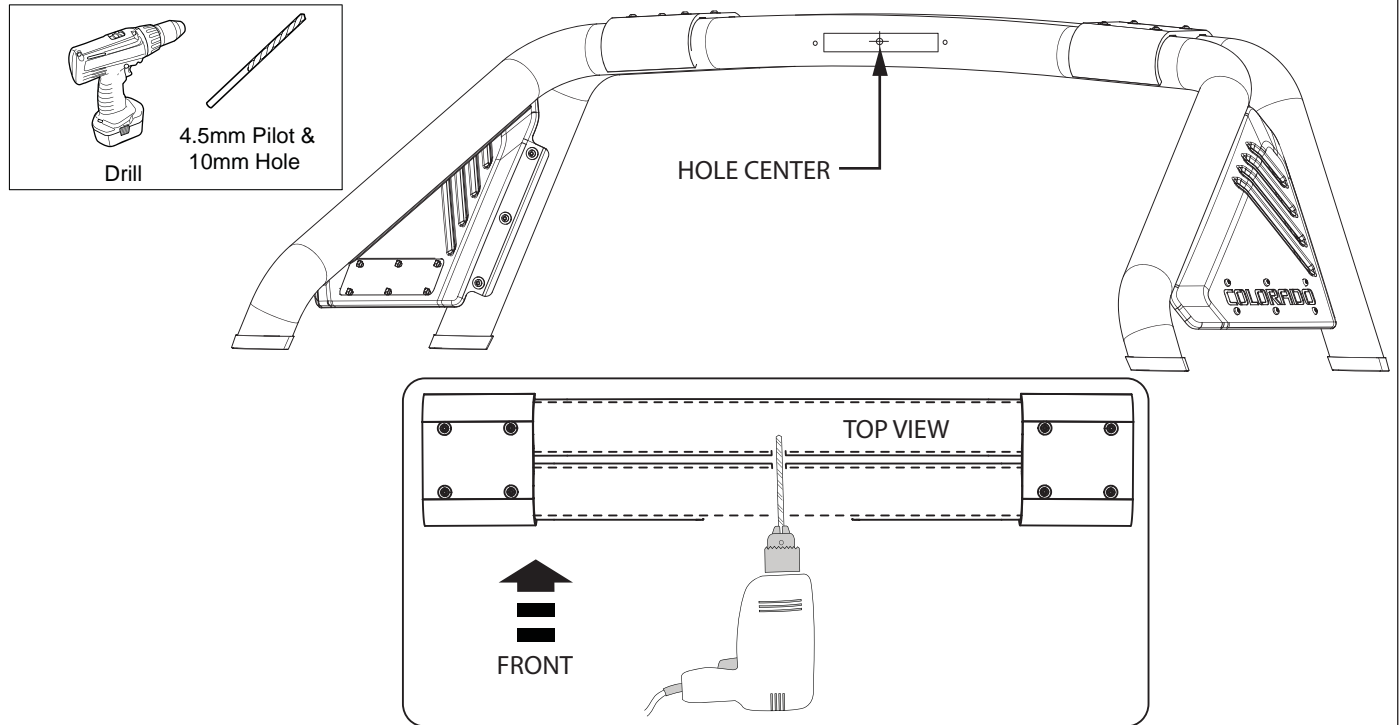
2. Cut out the paper template from the last page, insert the template into the channel and push all the way to the end of the LHS Side Rail. Centre punch the hole location, pilot drill with a 4.5mm drill and then drill a 10mm hole all the way through the side rail. Clean out any swarf from the channel and the tub. Press the grommet (10) into the hole in the side rail as shown ensuring that it is well seated.



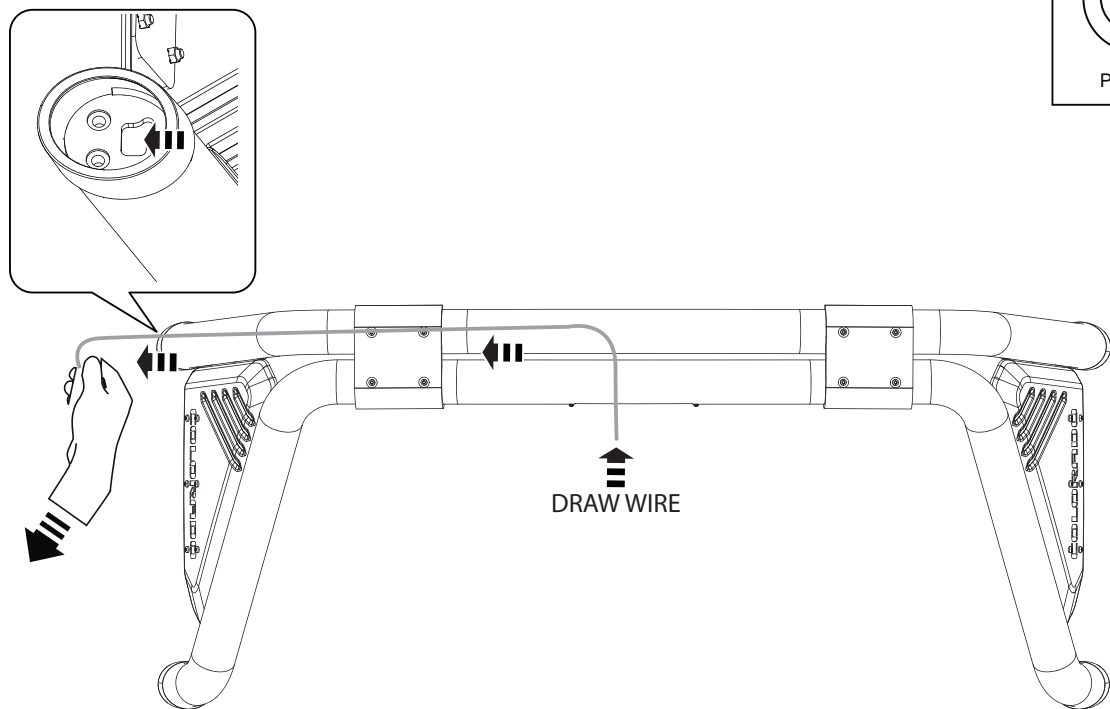
3. Locate the LED loom and connector on the LHS rear foot of the sports bar. Pull the connector minimum 100mm out of the rear leg. Using Electrical Pliers cut the wires close to the foot and strip the sheathing from each end leaving 10mm of bare wire exposed in preparation for reconnection to the connector.



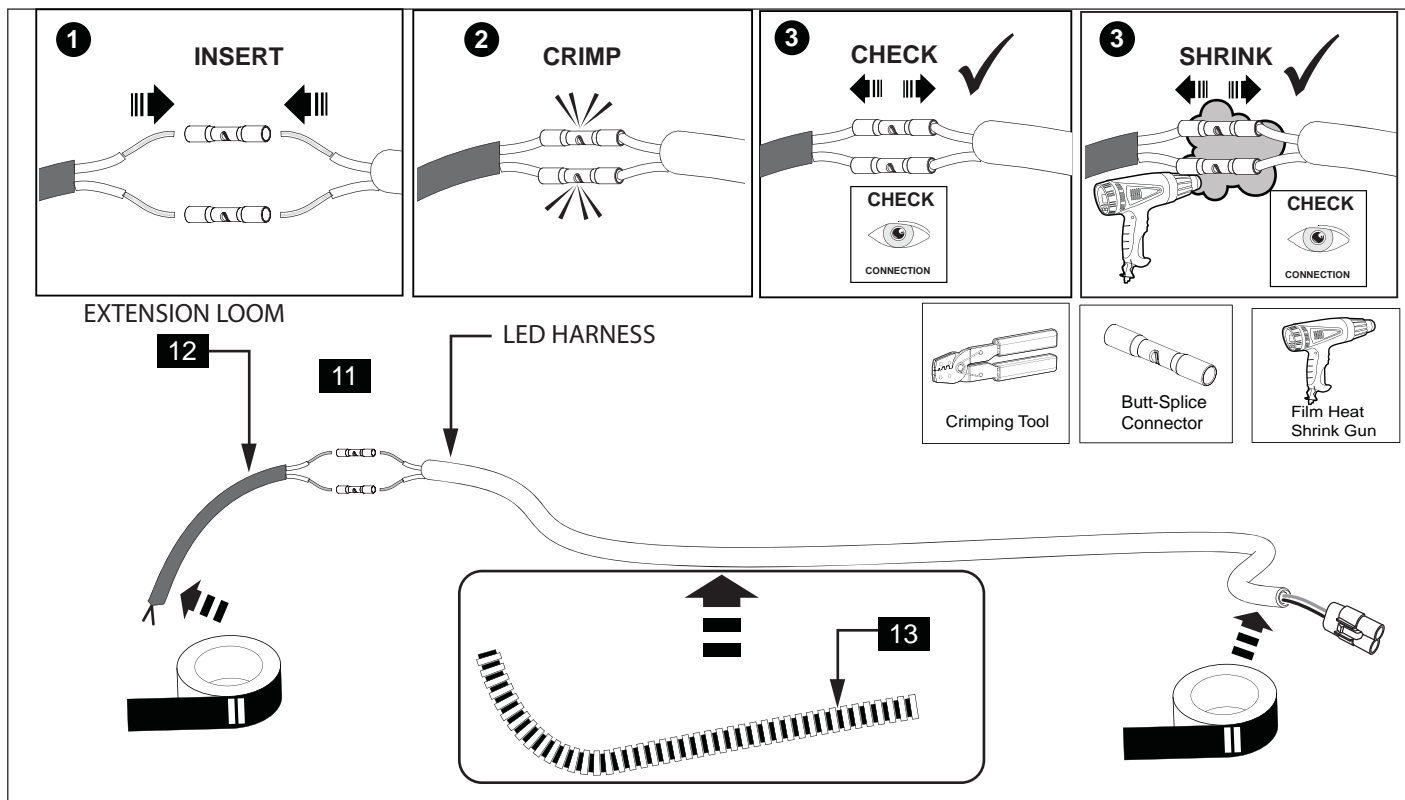
4. Remove the LED brake light and disconnect from the connector inside the bar. Retain the LED and hardware. Pull out the wiring out of the sports bar and retain.



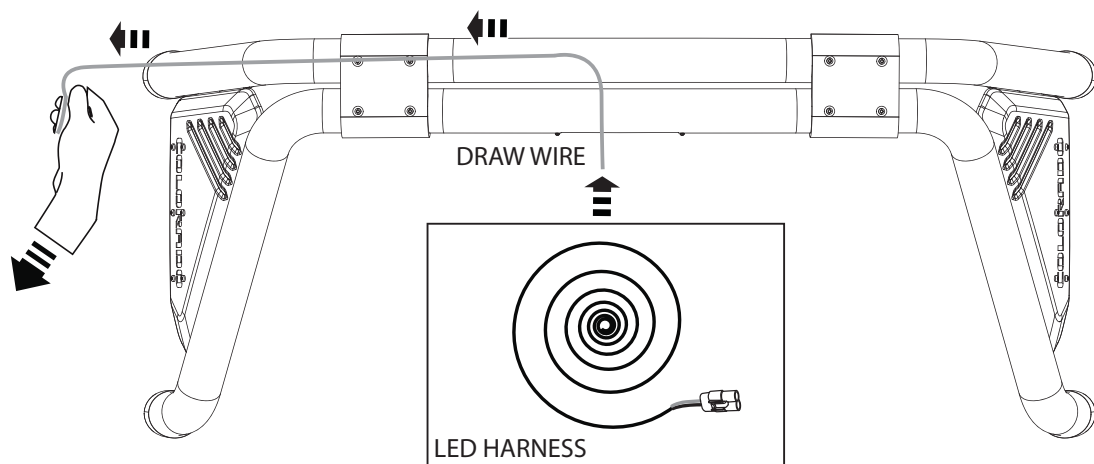
5. Mark a hole center inside of the rear sports bar tube as shown. Drill hole through the rear tube wall into the front tube with pilot drill 4.5mm and later with 10mm drill. Clean both holes sharp edges.



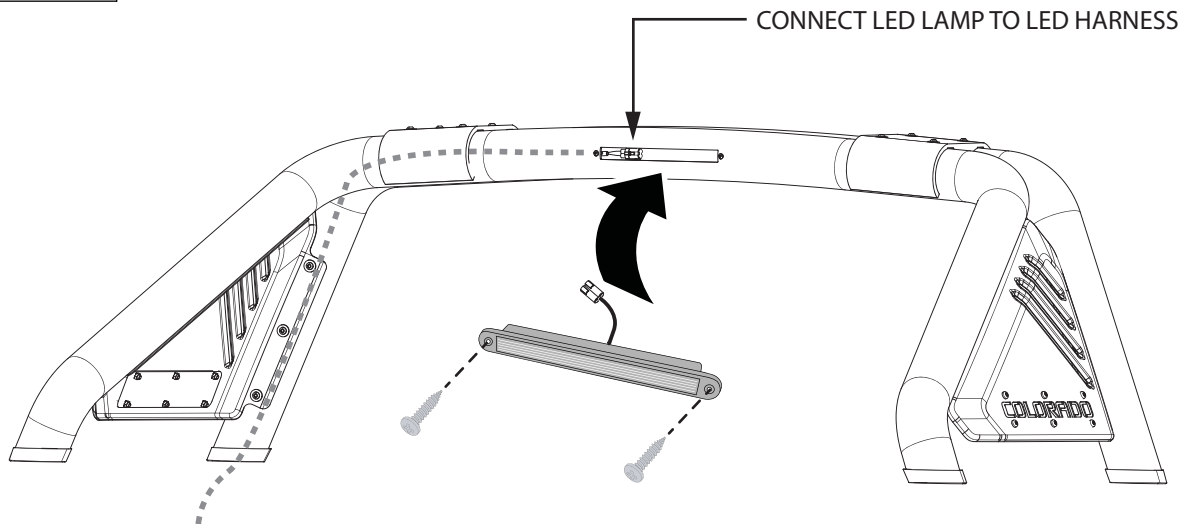
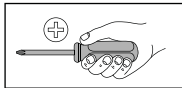
6. Feed a draw wire through the drilled hole and down to the bottom foot of the front left sports bar leg.



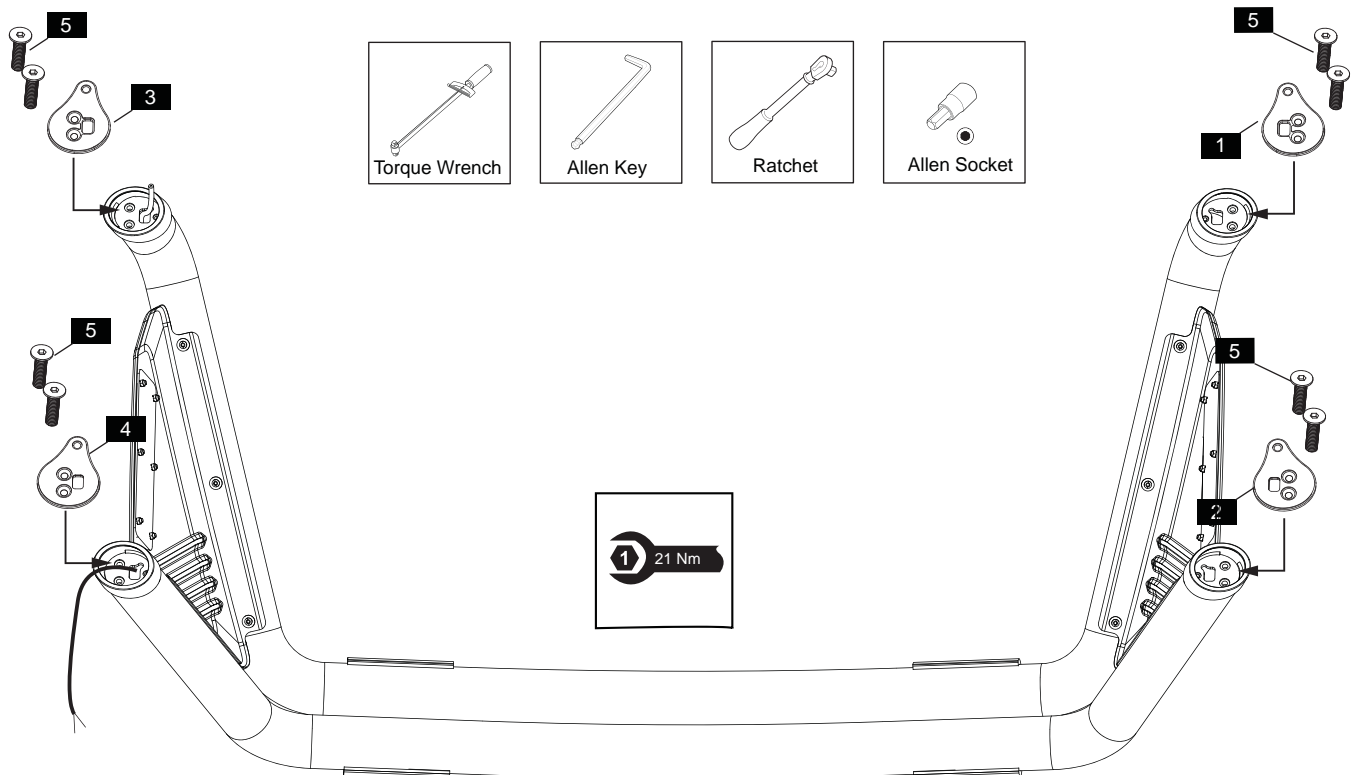
7. Attach one side of the Extension loom (102) to the end of the LED Harness using the water proof butt splice connectors (11) and a crimping tool. Ensure a good connection is made by gently pulling the connection. Shrink the film on each of the three connectors with a Film Heat Shrink Gun. Ensure appropriate PPE is used. Fit the plastic tube (13) over the whole wiring and secure each end with electrical tape.



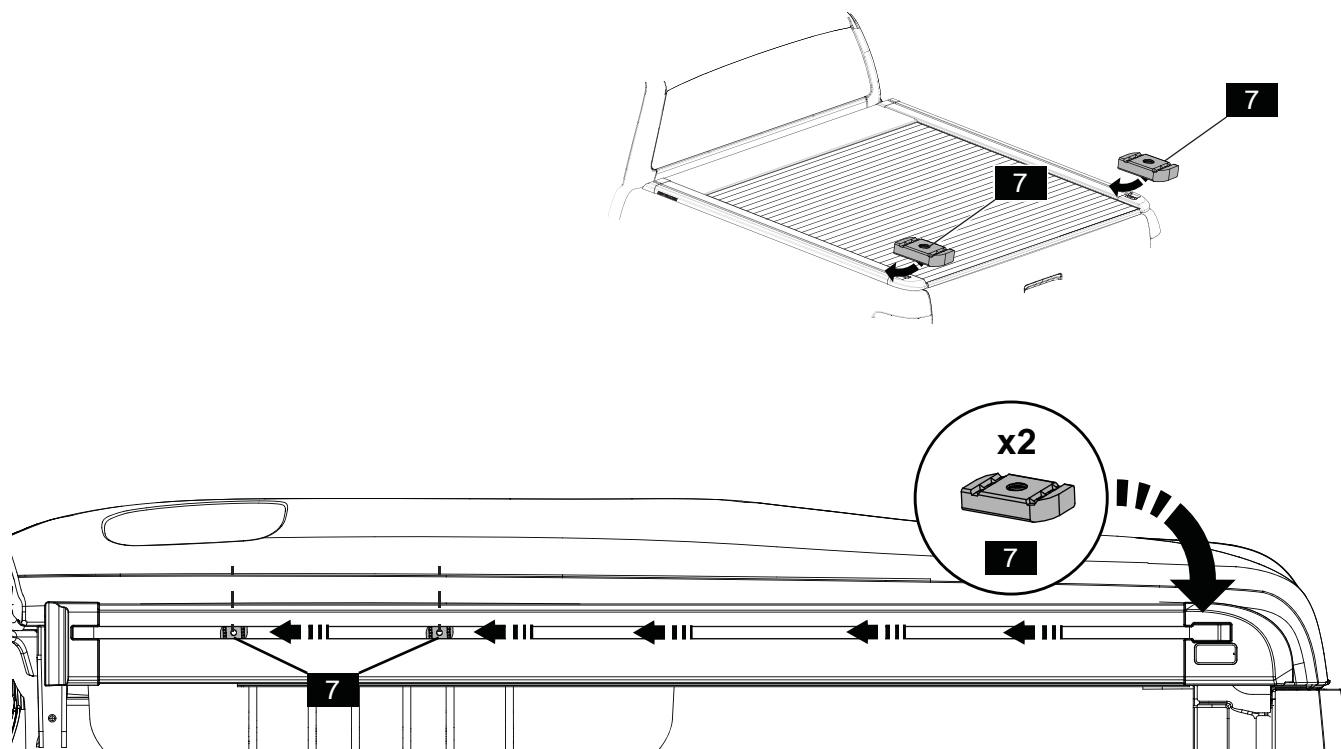
8. Using previously fitted draw wire pull the LED harness into the sports bar top tube and down to the front leg.



9. Refit the LED brake light and connect from the connector inside the bar.



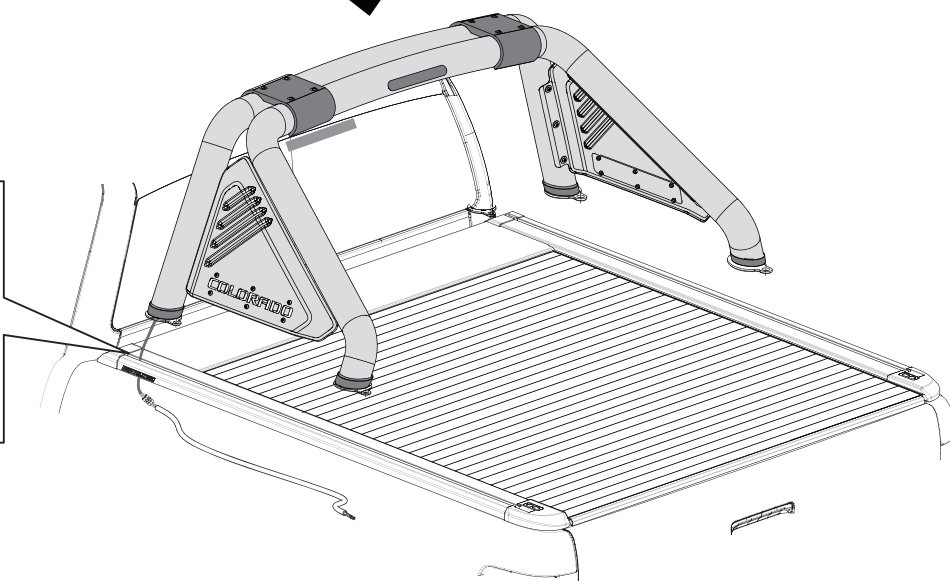
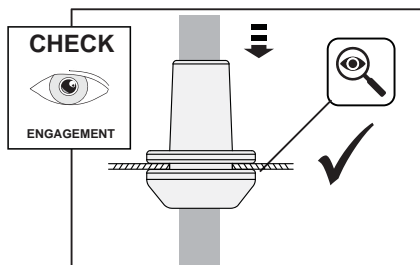
10. Attach the adaptor kit brackets (1),(2),(3),(4) to the respective feet as shown with the M8 Counter Sunk Socked Head Screws (5). Torque all bolts to 21Nm.



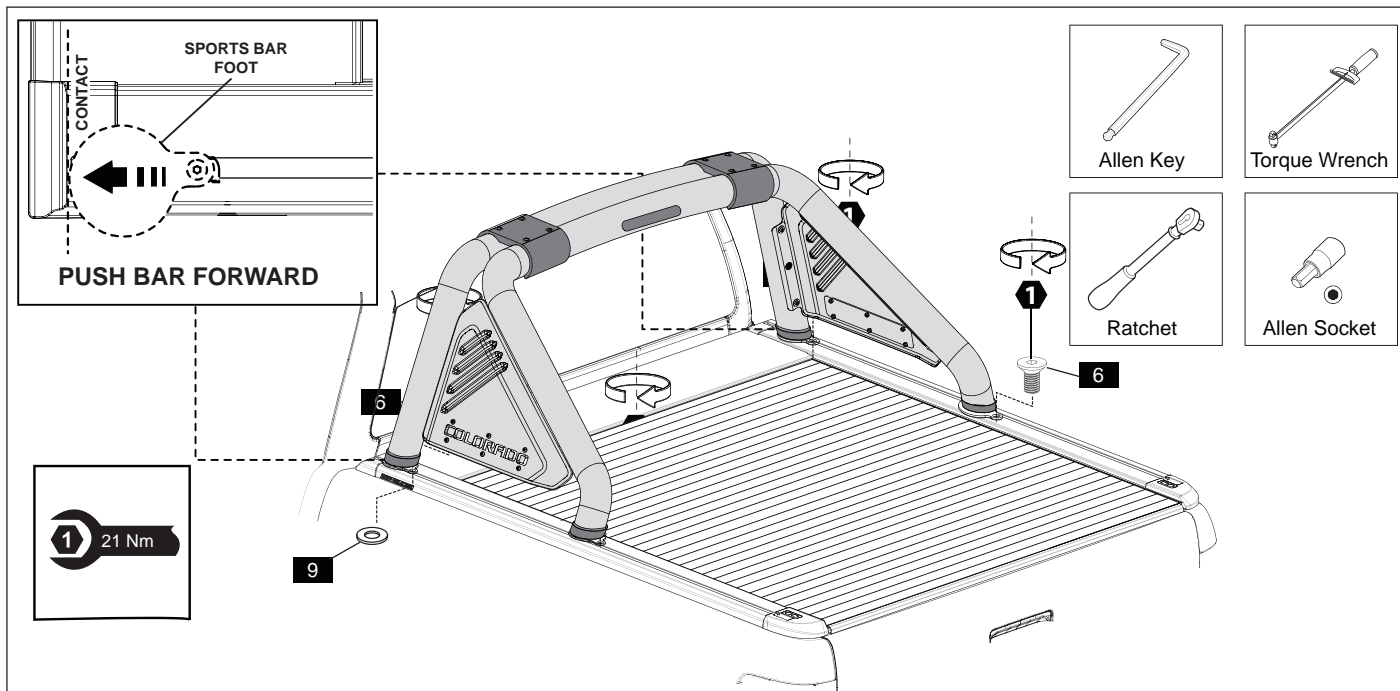
11. Slide two M8 T Nuts (7) into the RHS and LHS T-channel of the side rails as shown. Ensure they align roughly with the holes in the Front and Rear Side Plate on the feet of the sports bar.



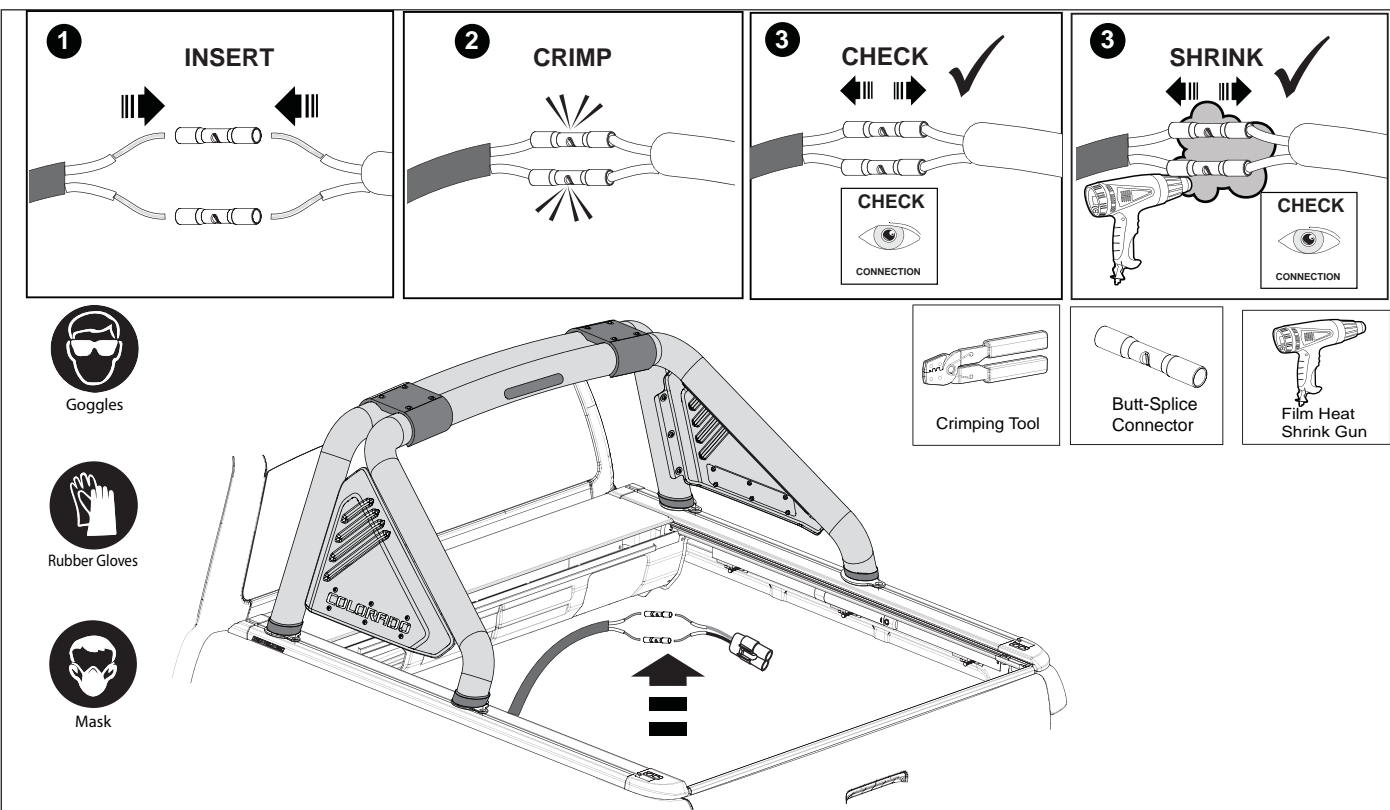
SECTION VIEW



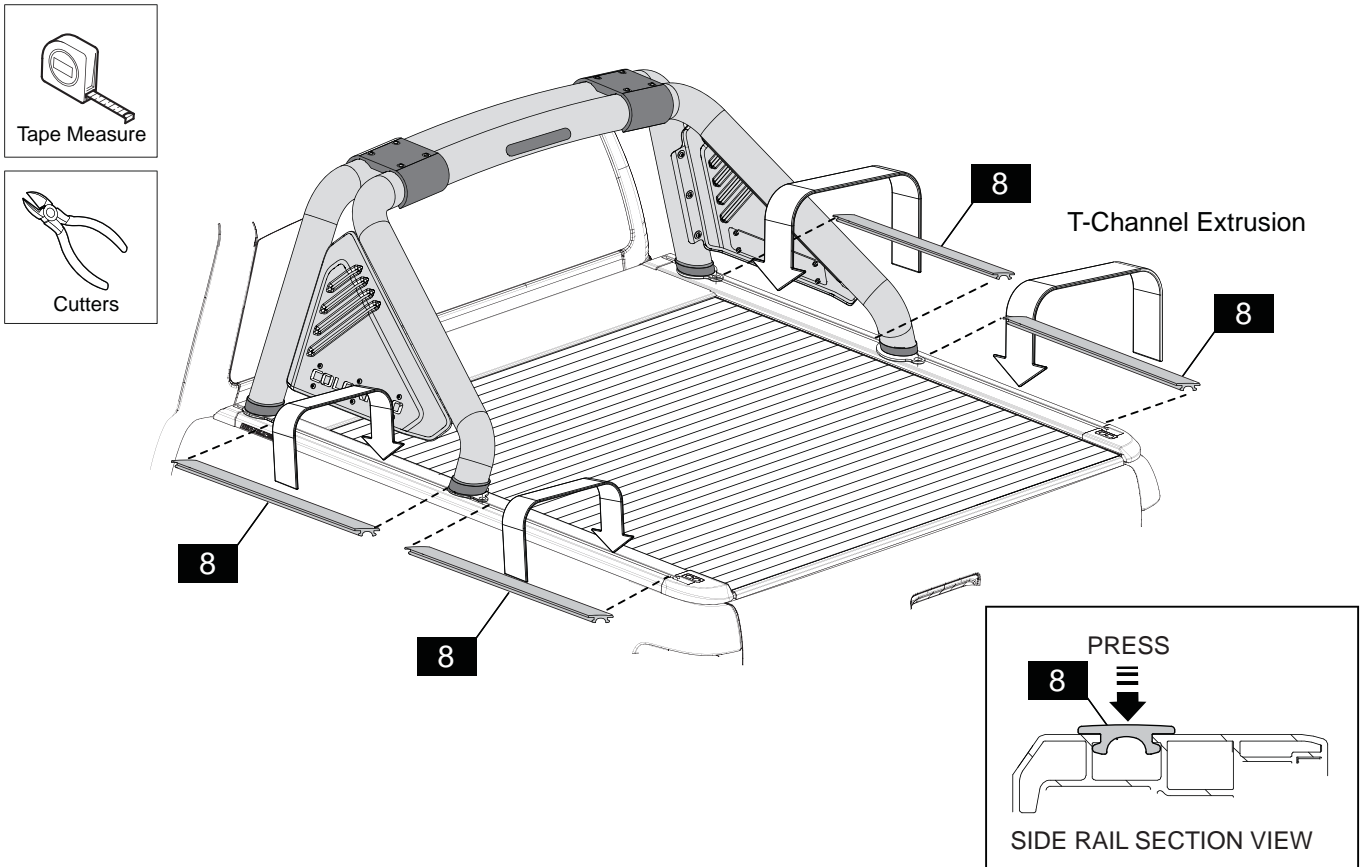
12. Position the sports bar above the tub and feed the LED Harness through the rubber grommet in the LHS rail. Press the grommet into the hole in the side rail as shown ensuring that it is well seated. Lower the sports bar into position over the rail taking care not to pinch the cable.



- 13.** Push the sports bar forward so that the front feet are aligned with the front of the corner cap as shown. Reposition the M8 T Nuts (7) in the T-channel to align with the holes in the Foot Plates (1),(2),(3),(4). Place a washer (9) under front foot only and then secure the sports bar in place with four M8 Counter Sunk Socked Head Screws (6). Torque to 21Nm.

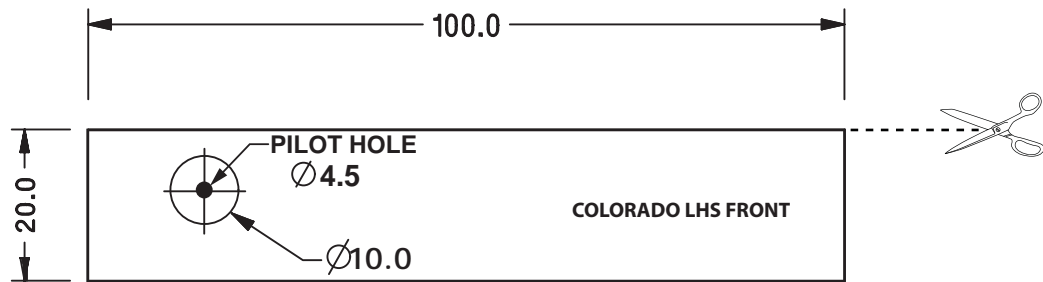


- 14.** Connect the Sports Bar Connector removed early to the LED harness with the Butt Splice Connectors (6) and a crimping tool. Ensure a good connection is made by gently pulling the connection. Shrink the film on each of the connectors with a Film Heat Shrink Gun. Ensure appropriate PPE is used. Connect the LED harness to the Vehicle Side Sports Bar Loom.




15. Measure the distance between the feet in the side rail channels and cut the T-Channel Extrusion (8) to length. Fit the T-Channel Extrusion into the side rail channels by firmly pressing it into the channel recess.

DRILL TEMPLATE LEFT HAND SIDE



Sheet Size: A4
Scale: 1:1

Important
 Always confirm the length of the 50mm marker before cutting out the templates.

